



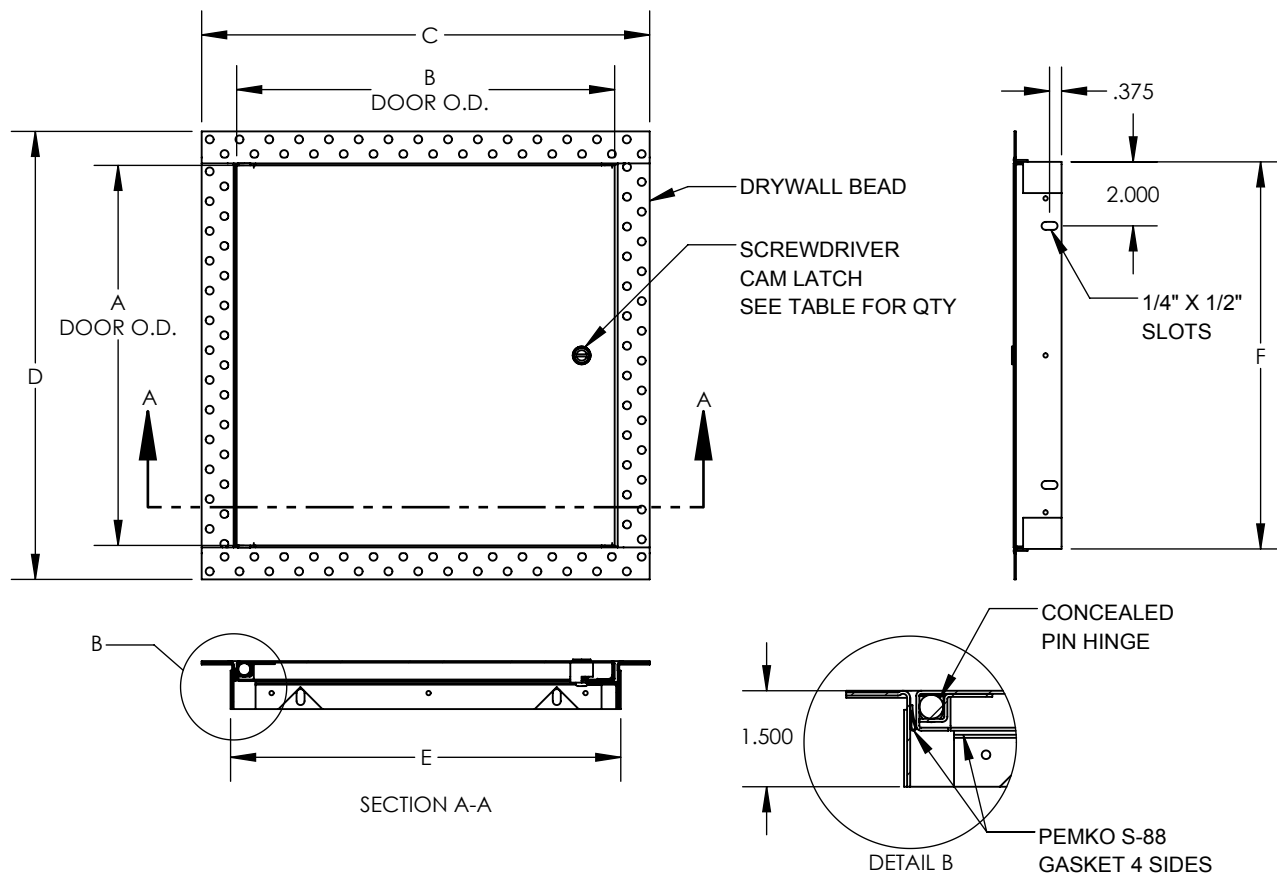
ACUDOR

www.acudor.com
 U.S.A.: info@acudor.com / 800.722.0501
 CANADA: info@acudor.ca / 844.228.3671
 INTERNATIONAL: info@acudorintl.com
 (905) 428.2240

AS-9000-DW

**AIR SEAL FLUSH MOUNT
 FOR DRYWALL**

QTY	NOMINAL SIZE	A	B	C	D	E	F	LATCH
	8 X 8 (203 X 203)	7.875 (200)	7.843 (199)	10.000 (254)	10.000 (254)	8.194 (208)	8.096 (206)	1
	12 X 12 (305 X 305)	11.875 (302)	11.843 (301)	14.000 (356)	14.000 (356)	12.194 (310)	12.096 (307)	1
	16 X 16 (406 X 406)	15.875 (403)	15.843 (402)	18.000 (457)	18.000 (457)	16.194 (411)	16.096 (409)	2
	18 X 18 (457 X 457)	17.875 (454)	17.843 (453)	20.000 (508)	20.000 (508)	18.194 (462)	18.096 (460)	2
	24 X 24 (610 X 610)	23.875 (606)	23.843 (606)	26.000 (660)	26.000 (660)	24.194 (615)	24.096 (612)	2
	24 X 36 (610 X 914)	35.875 (911)	23.843 (606)	26.000 (660)	38.000 (965)	24.194 (615)	36.096 (917)	2



STANDARD FEATURES:
 SCREWDRIVER OPERATED CAM LATCH,
 18GA (0.048") CARBON STEEL
 BAKED WHITE PRIME COAT (ADDITIONAL
 FINISH PAINT IS RECOMMENDED FOR
 SUPERIOR CORROSION RESISTANCE).

OPTIONS
 LOCK TYPE
☐ CYLINDER LOCK AND KEY
☐ ALLEN HEAD CAM LATCH
☐ SPANNER HEAD CAM LATCH
☐ THUMB TURN LATCH
☐ OTHER

LOCK TYPE
☐ STAINLESS STEEL
☐ OTHER

FINISH

JOB NAME:

APPROVED BY:

CUSTOMER:

DATE:

This document contains proprietary information which is the property of Acudor Products. It shall not be modified, copied, furnished, nor distributed (in whole or in part) without proper authorization. Copyright © 2020 Acudor Products.