



ACUDOR

www.acudor.com
U.S.A: info@acudor.com / 800.722.0501
CANADA: info@acudor.ca / 844.228.3671
INTERNATIONAL: info@acudorintl.com
(905) 428.2240

FB-5060-TD

RECESSED FOR TILE
FIRE RATED - FOR WALLS

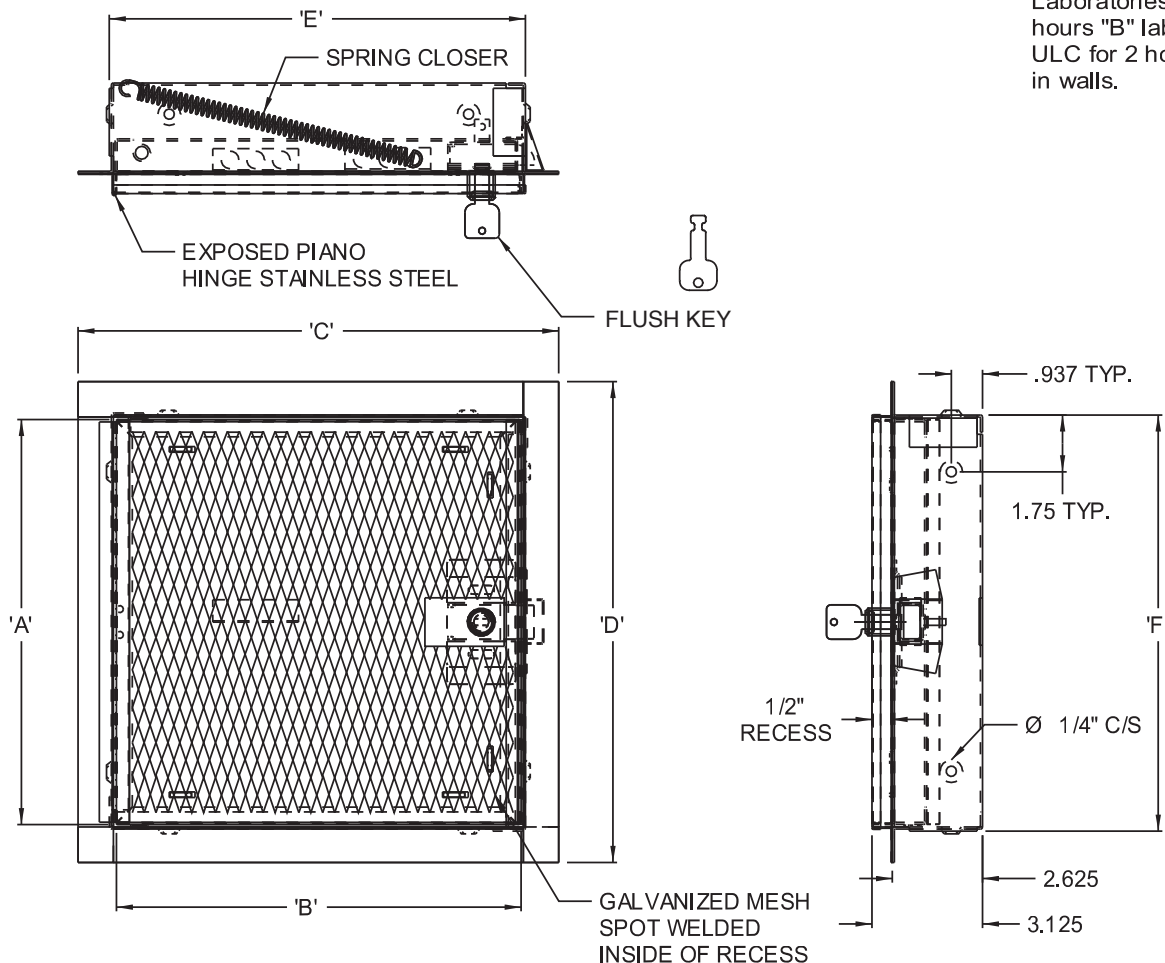
QTY.	NOMINAL SIZE	A	B	C	D	E	F	LOCK
	12 x 12 (305 x 305)	11.78 (299)	11.78 (299)	14 (356)	14 (356)	12.12 (308)	12.12 (308)	1
	16 x 16 (406 x 406)	15.78 (401)	15.78 (401)	18 (457)	18 (457)	16.12 (409)	16.12 (409)	1
	18 x 18 (457 x 457)	17.78 (452)	17.78 (452)	20 (508)	20 (508)	18.12 (460)	18.12 (460)	1
	24 x 24 (610 x 610)	23.78 (604)	23.78 (604)	26 (660)	26 (660)	24.12 (613)	24.12 (613)	1
	24 x 36 (610 x 914)	35.78 (908)	23.78 (604)	26 (660)	38 (965)	24.12 (613)	36.12 (917)	2

RECOMMENDED TILE ADHESIVE:

SUPER #3000 DRY MORTAR MANUFACTURED BY: VESUVIUS USA Corp.
www.vesuvius.com OR AN INORGANIC, CEMENTITIOUS EQUIVALENT.

WALLS

Approved by Underwriters Laboratories (UL) for 1 1/2 hours "B" label in walls and ULC for 2 hours "B" label in walls.



STANDARD FEATURES:

UNIVERSAL SELF LATCHING BOLT- OPERATED BY FLUSH KEY, AND INSIDE TURN RELEASE.
CARBON STEEL, BAKED WHITE PRIME COAT (ADDITIONAL FINISH PAINT IS RECOMMENDED FOR SUPERIOR CORROSION RESISTANCE).

OPTIONS:

LOCK TYPE

☐ RIM CYLINDER LOCK

MATERIAL

☐ STAINLESS STEEL
☐ OTHER

FINISH

ALL FIRE RATED:

SPECIAL SIZES CAN BE ORDERED, BUT BASIC CONSTRUCTION
MUST REMAIN CONSTANT TO COMPLY WITH UL AND ULC REGULATIONS.

JOB NAME:

APPROVED BY:

CUSTOMER:

DATE: